



Service Kit for Garden Sprayers

Product Manual

Important

Read these instructions before assembly and use. Release pressure from the bottle before refilling or replacing parts. This is done by slowly pulling up the safety valve and holding until all air has been released. Then unscrew the container cap.

Note: some remaining air may be expelled. Ensure bottle has been rinsed with clean water before any servicing is done.

Application

This service kit is suitable for Hills Garden Sprayers 3L to 8L. Not suitable for use with Hills Industrial Sprayers, Hills Small Pressure Sprayers or Hills Knapsack Sprayers.

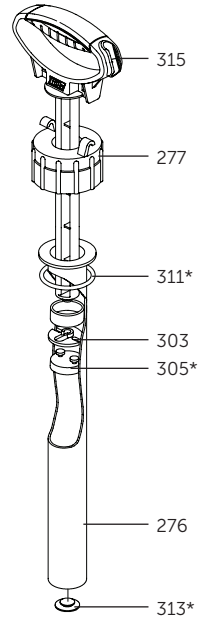
Pack contents

ID	Description	Where used	Qty.
305	Bucket Washer	Pump Assembly	1
313	Pump Valve	Pump Assembly	1
303	Bucket Support Washer	Pump Assembly	1
311	Large O Ring	Pump Assembly	1
279	Valve Cap Seal	Valve Assembly	1
298	Valve Plunger	Valve Assembly	1
327	Safety Valve	Bottle	1
308	Small O Ring	Lance	1
309	Sealing Ring	Lance	3

Pump Servicing

To Remove

- Release pressure from bottle. Unscrew Container Cap **277** and withdraw Pump Assembly from bottle.
- Unscrew Pump Barrel **276** from Container Cap **277**.
- Remove O Ring **311** from Pump Barrel **276**.
- Remove Pump Valve **313** from the bottom of the Pump Barrel.
- Remove Bucket Washer **305** and Bucket Support Washer **303** from bottom of Pump Handle **315**.



* Lubricate with Vaseline

To Replace

- Fit new O Ring **311** to Pump Barrel **276** and firmly seat with finger pressure. Lubricate O Ring with Vaseline.
- Fit new Bucket Support Washer **303** and Bucket Washer **305** to bottom of Pump Handle **315**.
- Lubricate Bucket Washer **305** with Vaseline and insert Pump Handle **315** into Pump Barrel **276**.
- Apply Vaseline to new Pump Valve **313** and fit to bottom of Pump Barrel **276**.
- Fit Pump Assembly into bottle and firmly screw Container Cap onto bottle neck.

Handle and Valve Plunger Servicing

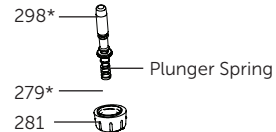
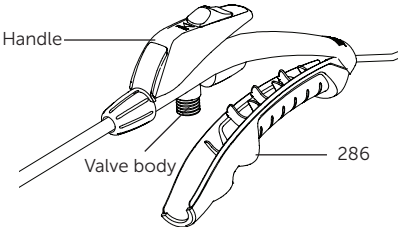
To Remove

- Unscrew Valve Cap **281** and remove Valve Cap Seal **279** from inside Valve Cap.
- Remove the Bottom Handle **286**.
- Grip the Plunger Assembly **298** and remove from the Valve Body.
- Keep Plunger Spring and discard the old Valve Cap Seal and Yellow Plunger Assembly.
- Inspect the inside of the Valve Body and flush with water if necessary.

To Replace

- Lubricate new Valve Plunger **298** with Vaseline and fit Plunger Spring to it. Insert assembly into the Valve Body.
- Lubricate the new Valve Cap Seal **279** with Vaseline and place inside the Valve Cap **281**. Push firmly into place.
- Refit the Bottom Handle **286**.
- Fit the Valve Cap **281** to the Valve Body and tighten firmly by hand.

Note: Do not use hand tools to tighten.



* Lubricate with Vaseline

Safety Valve Replacement

Note: Safety Valve can not be serviced. It should be replaced with a new one.

To Remove

- Unscrew the Safety Valve **327** from the Bottle.

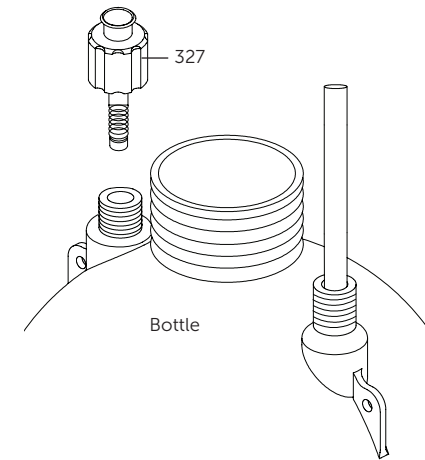
To Replace

- Fit new Safety Valve **327** into Bottle and tighten securely.

Note: Do not use hand tools to tighten.

Test the Safety Valve

- Fill the bottle completely with clean water and pressurise by pumping. When the sprayer is fully pressurised the valve should lift, allowing the red indicator to become visible and air to escape. If this does not happen, replace the safety valve.



Nozzle Lance only

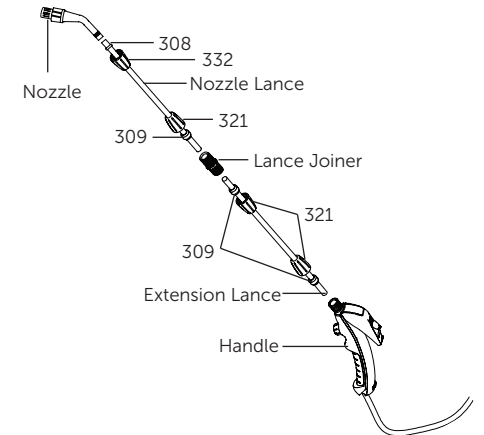
To Remove

- Unscrew the Large Handle Retaining Cap **321** and pull Nozzle Lance out of Handle.
- Push Large Handle Retaining Cap **321** inwards and remove Sealing Ring **309**.
- Unscrew the Small Nozzle Retaining Cap **332** and pull Lance out of Nozzle.
- Push Small Nozzle Retaining Cap **332** inwards and remove O Ring **308**.

To Replace

- Fit new Sealing Ring **309** to end of Lance. Ensure it is placed onto end with the Large Handle Retaining Cap **321**.
- Fit new O Ring **308** onto the other end of the Lance.
- Push lance into Handle and tighten Large Handle Retaining Cap **321** firmly.
- Push other end of Lance into the Nozzle and tighten Small Retaining Cap **332** firmly.

Note: Do not use hand tools to tighten.



Hills Contacts

We are committed to providing you with complete customer satisfaction. If you have any questions or comments about our products or services please contact your nearest Customer Service Centre during their local business hours:

Australia

1300 300 564
hhl.enquiries@woolworths.com.au

New Zealand

0800 021 027
hhl@progressive.co.nz

Hills Websites

hillshome.com.au
Hills Home Living

hillshome.com.au/need-help/
Hills Consumer Advice

Please retain this Product Manual. Record the following information for future reference.

Product Number (printed on label): FH _____

Date of purchase: _____

Name and location of store: _____

Hills Home Living
A.B.N. 92 138 990 584
Issue October 2016
HH2380a



Nozzle Lance and Extension Lance

To Remove

- Unscrew the Large Handle Retaining Cap **321** on the Extension Lance and pull Lance out of Handle.
- Unscrew the Large Retaining Cap **321** on the Extension Lance from the Lance Joiner and pull out of the Joiner.
- Push the Retaining Caps inwards and remove both Sealing Rings **309**.
- Unscrew the Large Retaining Cap **321** on the Nozzle Lance from the Lance Joiner and pull out of the Joiner.
- Push the Retaining Cap inwards and remove the Sealing Ring **309**.
- Unscrew the Small Nozzle Retaining Cap **332** and pull Lance out of Nozzle.
- Push Small Nozzle Retaining Cap **332** inwards and remove O Ring **308**.

To Replace

- Fit new Sealing Rings **309** to ends of the Extension Lance.
- Fit new Sealing Ring **309** to end of Nozzle Lance. Ensure it is placed onto end with the Large Handle Retaining Cap **321**.
- Fit new O Ring **308** onto the other end of the Nozzle Lance.
- Push the end of the Lance into the Nozzle and tighten Small Retaining Cap **332** firmly.
- Fit the Extension Lance to the Lance Joiner along with the Nozzle Lance. Firmly tighten Large Retaining Caps **321**.
- Push Extension Lance into Handle and tighten Large Handle Retaining Cap **321** firmly.

Note: Do not use hand tools to tighten.

Safety Instructions

Caution: contents under pressure. Read this before operating.

- Release pressure from the bottle before refilling or replacing parts. This is done by slowly pulling up the safety valve and holding until all air has been released. Then unscrew the container cap. **Note:** some remaining air may be expelled.
- Inspect the condition of all fittings before each use. Do not attempt to use your sprayer with worn or damaged parts. These parts should be replaced. (Refer to spare parts list).
- Safety valve operation: over pumping will cause the safety valve to open and release excess pressure. It will close when safe operating pressure is reached.
- Safety valve test: fill the bottle completely with clean water and pressurise by pumping. When the sprayer is fully pressurised the valve should lift, allowing the red indicator to become visible and air to escape. If this does not happen, replace the safety valve.
- Your sprayer is made from many different types of plastic materials, and although the liquid you may wish to use is packed in a plastic container, it is not guaranteed that it will not damage your sprayer. Your sprayer is designed for use with a broad range of domestic water based herbicides, fungicides, insecticides and fertilisers. Do not use other types of chemicals as they may be detrimental to the safe operation of your sprayer.
- Follow chemical suppliers on-pack instructions.

Do

- ✓ Release pressure before filling/servicing
- ✓ Release pressure and clean after use
- ✓ Wear safety goggles and gloves
- ✓ Wear protective clothing and mask
- ✓ Spray water soluble chemicals
- ✓ Ensure adequate ventilation
- ✓ Wash hands and face after use
- ✓ Store away from sunlight
- ✓ Hand tighten fittings only
- ✓ Rinse inside of bottle before use
- ✓ Maintain and service regularly
- ✓ Read and understand chemical manufacturers' safety directions

Do Not

- ✗ Spray flammable liquids or solvents
- ✗ Leave full bottle unattended
- ✗ Eat, drink or smoke when spraying
- ✗ Direct spray on humans or animals
- ✗ Spray in windy conditions
- ✗ Spray in confined spaces
- ✗ Leave within reach of children
- ✗ Over fill the bottle
- ✗ Over pressurise
- ✗ Stand sprayer near naked flame or hot surfaces
- ✗ Tighten fittings with pliers etc.
- ✗ Allow children to use as a toy
- ✗ Modify bottle or safety valve