

# Hills® Portable™

## Indoor Outdoor Clotheslines Product Manual



**TO SUIT MODELS:**

**Portable™ 170**

**Portable™ 120**



## Congratulations

Congratulations on the purchase of your **Portable Clothesline**, which will bring you many years of trouble free and efficient drying, both indoors and outdoors.

It is important that you read this product manual thoroughly before assembly and use. In this way you will benefit from all of the design features and enjoy safe use of the product.

Thank you for choosing Hills.

## Warning



- **Caution:** Do not push or pull your portable clothesline across the floor as this could lead to breakage of the legs.
- To move the clothesline lift it completely from the floor (it may require two persons to avoid injury to yourself or damage to the product).
- Do not allow children or pets to swing on the Portable Clothesline or items of laundry.
- Ensure when opening and closing your Portable Clothesline that your hands are positioned where they will provide support and will not be caught in moving parts.
- Do not use for any purpose other than to hang and dry washing.
- Do not use your Portable Clothesline if parts are worn or damaged.
- Patents and registered designs apply to this product.

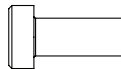
## Carton Contents

Part name	Qty.
Spreader and hinge assembly	1
Arm assembly	2
Leg assembly - LH	2
Leg assembly - RH	2
Leg brace	2
Hanging bracket	1
Door adaptor	1
Line	2
Accessory pack	1

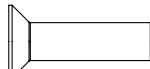
## Accessory Pack Contents

Part name	Qty.
Cover cap	4
Cover cap tool	1
M6 x 12 low profile screw	4
M6 x 16 countersunk screw	8
M6 x 30 button head screw	4
M6 Nyloc nut	4
Door adaptor screw	1
Hex key – 4mm	1

## Fastener Descriptions



M6 x 12 low profile screw



M6 x 16 countersunk screw



M6 x 30 button head screw



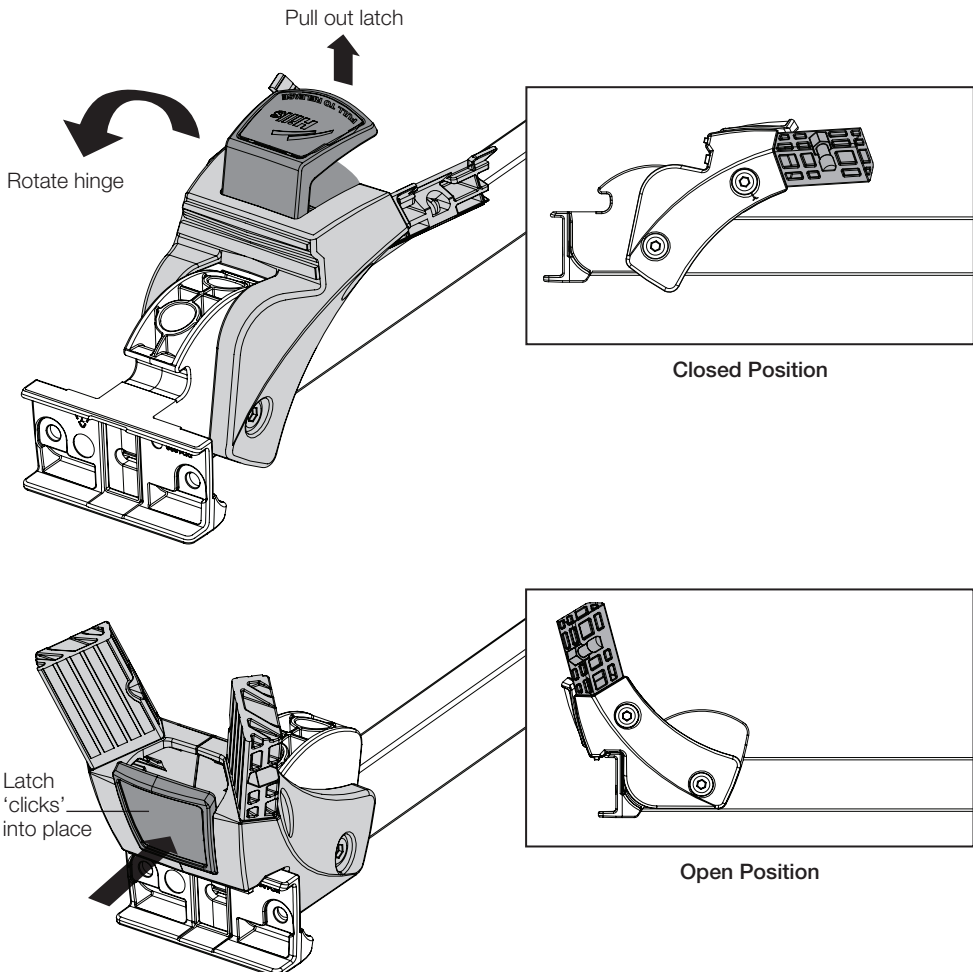
M6 nyloc nut  
(Always ensure nyloc nut is screwed on as shown)

The Hills Portable Clothesline is quick and easy to assemble. Just follow the steps below which are suitable for both the 170 (10 line) and 120 (8 line) models.

**NOTE: all diagrams in this manual show the Portable Clothesline 120.**

## Step 1 – Rotate the Hinges into the open position.

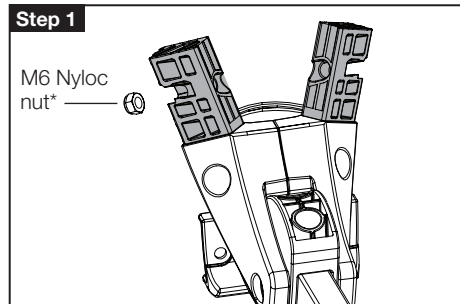
- 1.1 Place the spreader and hinge assembly on a flat surface.
- 1.2 Pull the latch out firmly.
- 1.3 Whilst holding the latch out, rotate the hinge to the 'open' position until the latch 'clicks' into place.
- 1.4 Repeat at other end.



# Assembly

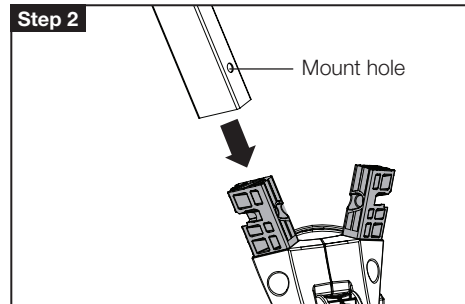
## Step 2 – Attach the Legs to the Hinge Assemblies.

Fasten the legs as shown in Steps 1–4.




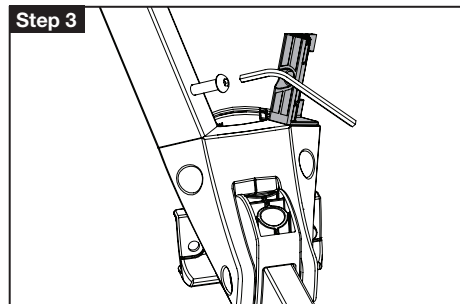
Locate the M6 nut on to the moulded leg section of the hinge moulding.

\*Nylon ring of the nut must face outward

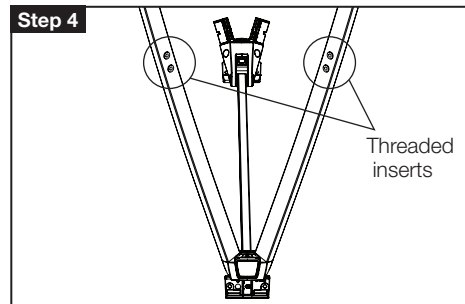


Fit leg tube (ensuring mount hole is oriented as shown).

 **NOTE: Check leg orientation (as per diagram in Step 4) to ensure the threaded inserts for securing the leg brace are facing each other.**



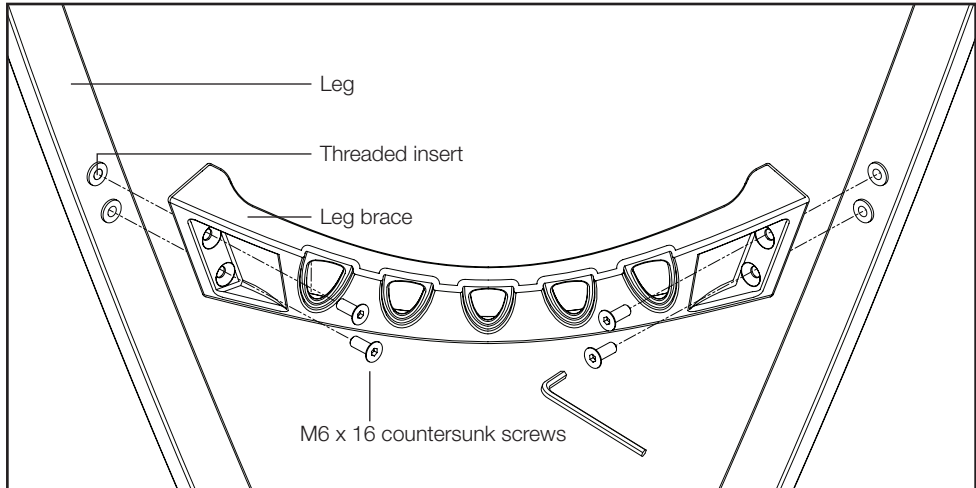
Insert and fasten securely the M6 x 30 button head screw using hex key – 4mm.



Repeat for all legs.

### Step 3 – Attach the Brace to the Legs.

- 3.1 Using the eight (8) M6 x 16 countersunk screws, attach the leg brace to the four (4) threaded inserts in the legs using the hex key – 4mm.
- 3.2 Fasten securely.
- 3.3 Repeat at other end.



### Step 4 – Turn the Portable Clothesline over and stand on the ground as shown.

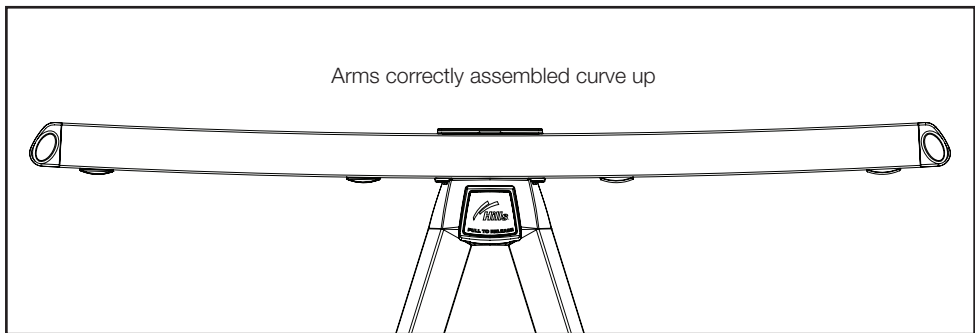
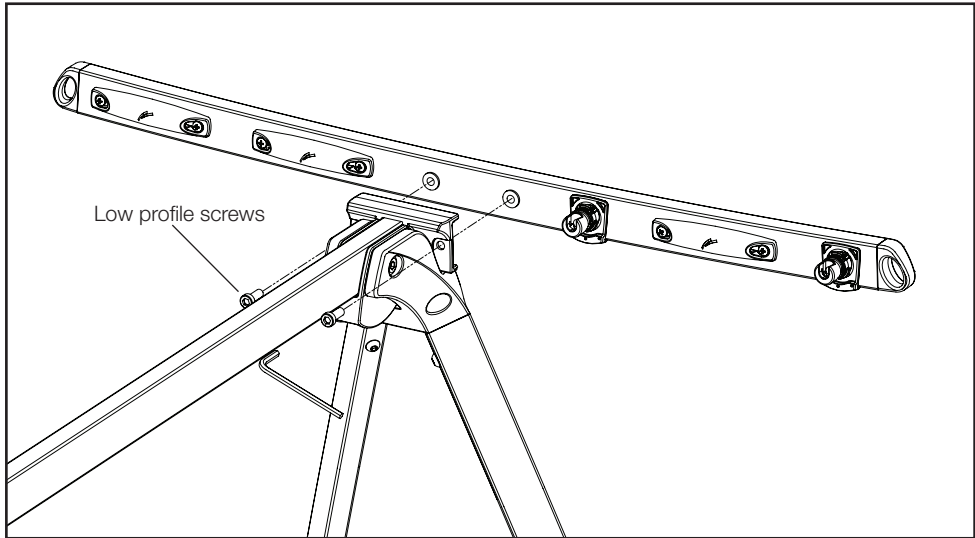


## Step 5 – Attach the arms.

- 5.1 Locate the arms into the recess in each end of the hinge assemblies ensuring the screw holes and insert fasteners align. Insert the two (2) M6 x 12 low profile screws and fasten securely using the hex key – 4mm.

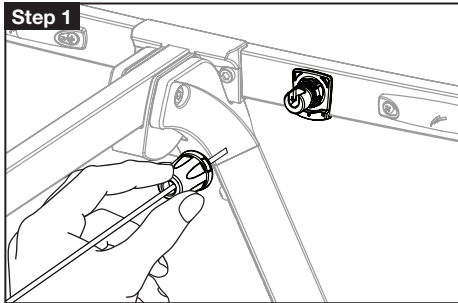


**Ensure the arms are assembled with the curve up (as shown).**

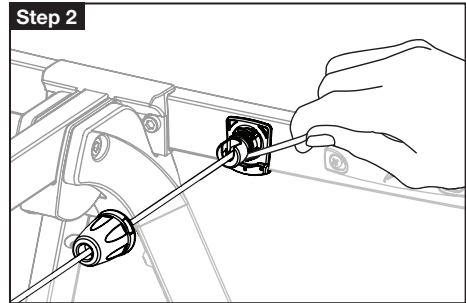


## Step 6 – Attach the line.

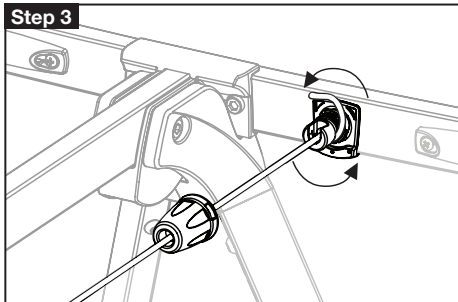
6.1 Fasten the line to the innermost line tensioner as shown in steps 1–4.



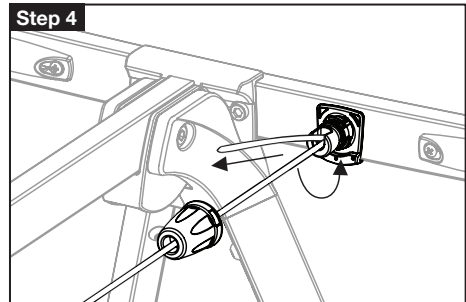
Fit the cover cap onto the end of the line, (ensure correct orientation).



Insert the line down through the front slot of the tensioner as shown, pull through 100mm (4") of line.

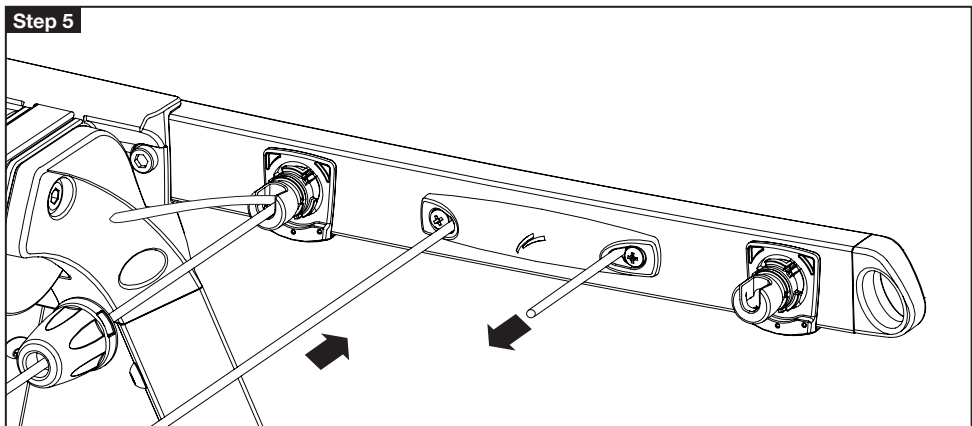


Loop the line around the rear groove of the tensioner and pull tight to prevent line slipping.



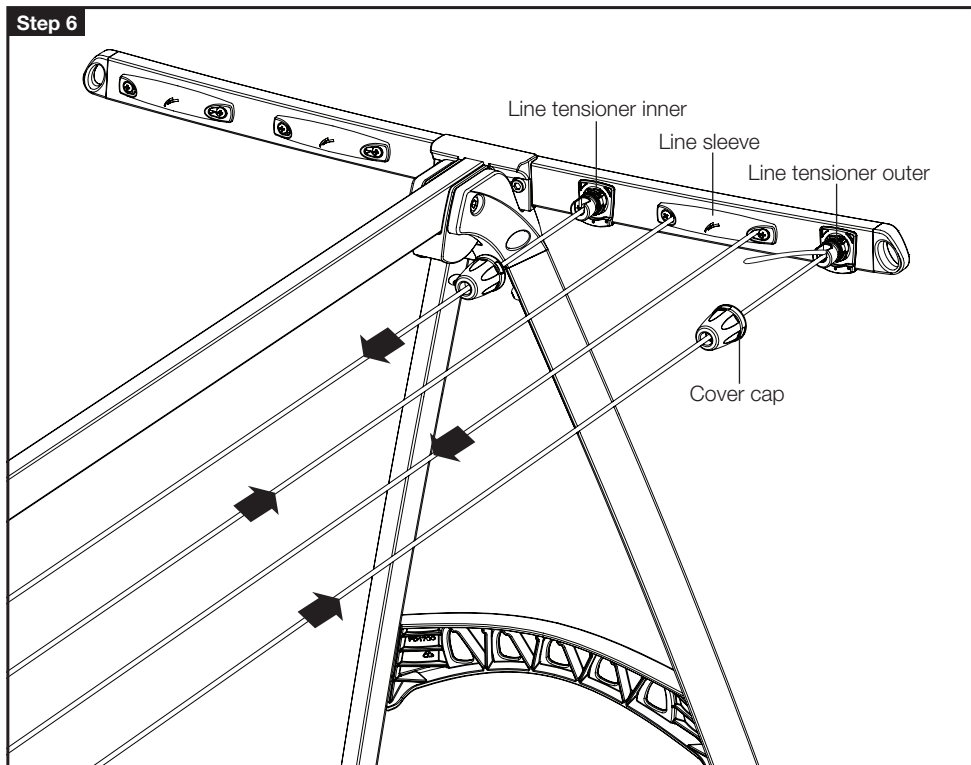
Feed the line up and back through the front slot of the tensioner and pull tight.

6.2 Feed the line through the line sleeves as shown in step 5.



## Assembly

- 6.3 Continue to thread the line through each of the line sleeves ensuring all lines are parallel, as shown in step 6.



- 6.4 Tie off line to the outer line tensioner as per steps 1–4 on page 7.  
**Do not tighten line yet.**
- 6.4 Repeat steps for the other side.
- 6.5 Tighten line on each side by pulling it 'through' the line sleeves and repeating tie off procedure with the outer line tensioner.

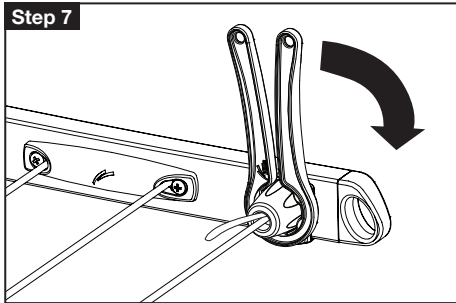


**Do not over tighten the line as you can distort the frame.**

Apply approximately the same 'tension' to both sides to keep the frame 'square' and to avoid twisting.



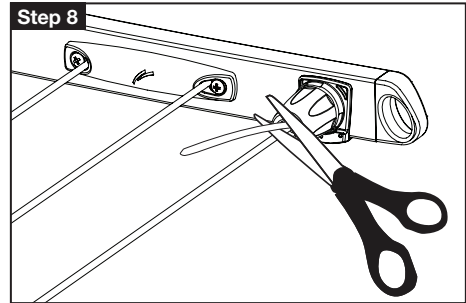
**6.6** Fit the cover caps and trim the line as shown in steps 7 and 8.



Feed end of the line through each cover cap and fit by rotating clockwise using the cover cap tool provided until a slight 'click' is felt.



A short video showing the attachment of line segments is available for viewing on the Hills website: [www.hillsproducts.com.au](http://www.hillsproducts.com.au)



Trim off any excess line flush with end of each cover cap as shown.

We recommend trimming excess line after a few loads of washing have been hung to allow 'pre-stretch' of line to occur.

Your Portable Clothesline is now ready to use.

## Step 7 – Line Tensioning

To re-tension lines if required

- 7.1** Remove either cover cap on the arm, by rotating anti-clockwise.
- 7.2** Untie the existing line.
- 7.3** Repeat steps as described on pages 8 and 9.

DO NOT OVER TENSION, as you can distort the frame.

## Step 8 – Folding and Unfolding

- 8.1 To fold away your Portable Clothesline, pull the latch out firmly with one hand, while supporting and rotating the legs up and around with your other hand. Keep rotating until the latch 'clicks' back into place, locking the legs closed.
- 8.2 Place the folded end on the ground.
- 8.3 Release the latch at the other end, and fold the legs while bringing the product to a vertical position.

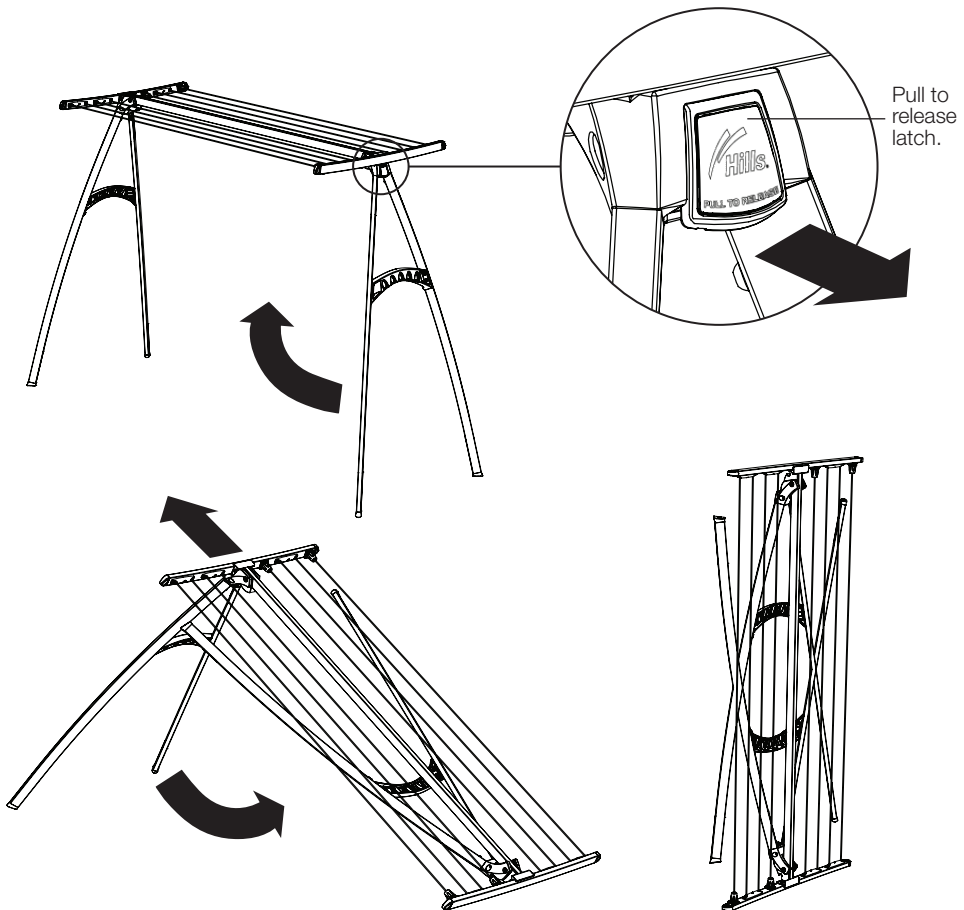
The folded product is now ready to be stored.

To unfold your Portable Clothesline, simply unlatch each leg and rotate around into the locked open position.



**Check the legs are not caught in the lines before trying to unfold.**

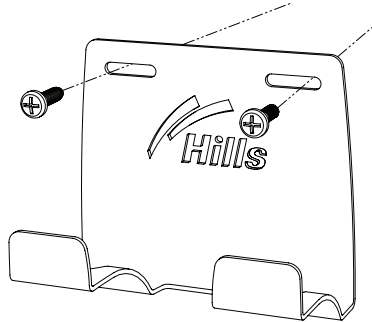
**Always ensure your hands are positioned where they will provide support and will not be caught in moving parts.**



## Step 9 – Hanging bracket

To hang your Portable Clothesline for convenient storage a hanging bracket has been included.

- 9.1** The hanging bracket can be fastened to almost any wall or vertical surface using appropriate fasteners (not supplied).



- 9.2 The hanging bracket and door adaptor can be used over most doors.**

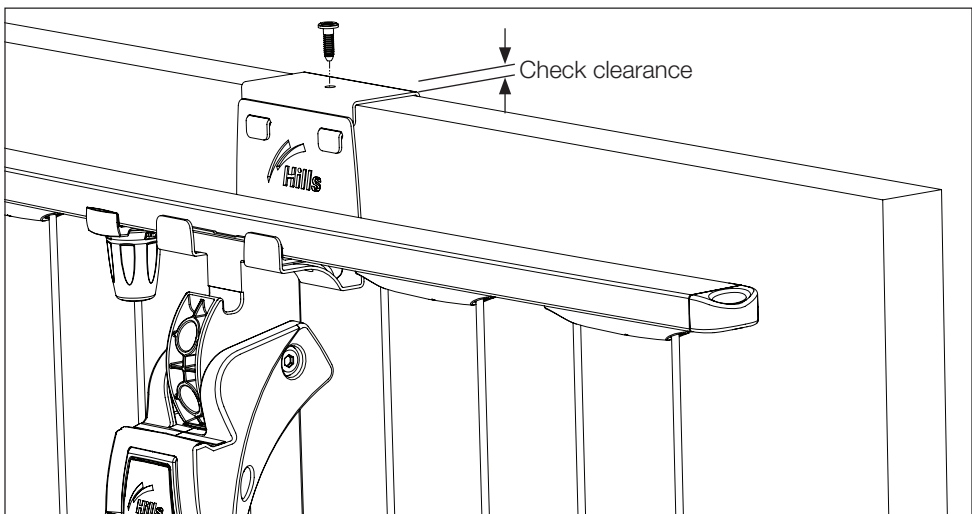
Simply place the hanging bracket and door adaptor over your door as shown.

Place the Portable Clothesline on the hanging bracket ensuring it is centered on the door and does not make contact with door handles, surrounding furniture and walls, when the door is opened and closed.

Secure the door adaptor to the top of the door with the small screw provided.



**Check there is clearance between the top edge of the door and door frame for the door adaptor and screw before fixing.**



## Hills Handy Hints

Heavy or large items like thick towels, sheets and quilts can be dried on the Portable Clotheslines. We recommend placing them over the inner lines leaving the outer lines for smaller objects. We also recommend spreading the load over two lines to allow more air circulation for faster drying. Sheets can be folded in half and dried over two lines.

Quilts can be dried by laying them over the Portable Clothesline then pegging the ends/corners together to lift them off the floor.

When placing washing on the Portable Clothesline ensure the weight is balanced and washing is placed evenly on both sides.

The Hills Portable Clothesline can be used almost anywhere but should not be used in strong wind conditions unless it is placed in a protected area and secured.

Hills Portable Clotheslines can be stored when not in use.

The braces that supports the legs include holes that provide additional hanging space.

Place pegs over the seams in your clothing to avoid or minimise peg marks on the fabric.

## Hills Smart Pegs

### Available from leading retailers

- Stylish, contemporary clothes pegs
- Dual moulded for comfort and grip
- UV stabilised for sun protection
- Rust-resistant stainless steel spring
- Selection of fashion colours



**WARNING: CHOKING HAZARD!**

Small parts. Not for children under 3 yrs.  
Not to be used as a toy.

## Care and Maintenance

It is a good idea to occasionally inspect all components and check for wear and tear or damage. If there is any damage, parts should be replaced with original Hills spares or the Portable Clothesline repaired before using again.

The Portable Clothesline should be periodically wiped clean with a damp cloth and mild detergent.



## Hills Warranty

1. Hills provides consumers with the following warranty in relation to this Product, in addition to complying with the requirements of any relevant legislation, including the Competition and Consumer Act 2010 (Cth) in Australia and the Consumer Guarantees Act 1993 in New Zealand (the **Acts**), except where a New Zealand consumer acquires the relevant Product for the purposes of a business.
2. In this warranty, we have used the following definitions:
  - (a) **Hills, our or we** means Hills Holdings Limited (ABN 35 007 573 417) of 159 Port Road Hindmarsh South Australia 5007;
  - (b) **Products** means the following goods manufactured by Hills (including products manufactured for Hills by its contract manufacturers): **Hills Portable Clothesline**;
  - (c) **Material** means a material or component used by Hills in the manufacture of the Products;
  - (d) **Warranty Period** means 3 years from the date of purchase of the relevant Product and, in relation to polycore line, means a period of 1 year from the date of purchase of the Product. If the Product or part (as the case may be) is repaired or replaced, there will be no extension to the original warranty period; and
  - (e) **Workmanship** means the handling, assembly and manufacturing processes performed by or on behalf of Hills in order to manufacture the Products.
3. Hills warrants that for the duration of the Warranty Period, all Products will be free of faults arising from defects in Workmanship or Materials, on the terms and conditions set out in this warranty.
4. Hills undertakes that if during the Warranty Period any Product, or any part of a Product, has failed to operate correctly due to faulty Workmanship or defective Material, it will repair or replace the Product or part (as the case may be) free of charge provided that the following procedure is met:
  - (a) The consumer must contact Hills upon becoming aware of any defect to a Product. The contact details for Hills are set out in this warranty and under the heading "Hills Contacts".
  - (b) Following consultation with Hills, Hills will determine whether there is a defect, and if so Hills agrees to (at Hills' option):
    - i. in the case of goods – repair, replace or supply equivalent goods, or pay the cost of any of those remedies to the consumer; or
    - ii. in the case of services – supply the services again or pay the cost of having the services supplied again.
  - (c) If Hills requests the return of the applicable Product or part, Hills will be responsible for the collection and freight costs of returning that Product or part. The consumer agrees to assist Hills with any reasonable request to enable Hills to collect such Product or part.
  - (d) Hills also agrees to be responsible for the freight costs to deliver any new Product or replacement part to the consumer.

## Warranty

5. This warranty is in addition to any non-excludable legal rights or remedies conferred on the consumer under any applicable Act and any similar laws. To the extent permitted by law, Hills' liability for any non-excludable condition or warranty is limited to rectifying any defect at its option, as set out in paragraph 4(b).
6. Subject to the requirements of any applicable Act or legislation and to the extent permitted by law, no liability (whether expressed or implied) of any nature whatsoever, is accepted by Hills for any consequential loss, damage or injury arising as a result of any fault in the Products.
7. This warranty does not extend to damage to Products which occurs during transit or transportation, or which is caused by any abuse, accident or improper installation, connection, use, adjustment or repair or use of goods otherwise than in accordance with instructions issued by Hills.
8. The warranty on Products is waived if any addition or attachment to the Products do not have Hills' specific approval or are not sold as Hills products. The Products are designed to perform specific tasks under established test loads and unauthorised attachments may produce stresses for which the design is not appropriate.
9. The following applies to consumers who purchased a relevant Product in Australia:

Our goods come with guarantees that cannot be excluded under the Australian Consumer Law. You are entitled to a replacement or refund for a major failure and compensation for any other reasonably foreseeable loss or damage.  
You are also entitled to have the goods repaired or replaced if the goods fail to be of acceptable quality and the failure does not amount to a major failure.

## Hills Contacts

We are committed to providing you with complete customer satisfaction. If you have any questions or comments about our products or services please contact your nearest customer service centre during their local business hours:

### **Australia**

1300 300 564  
info@hills.com.au

### **New Zealand**

09 262 3052  
sales@hills.co.nz

### **United States**

877 534 1371 (Eastern)  
gsutterlin@verizon.net

### **Europe**

+44 (0) 118 973 8971 (UK)  
enquiries@greenergardensolutions.co.uk

### **South Africa**

021 442 1540  
info@stingray.co.za

### **Hills Websites**

**www.hills.com.au**  
Hills Branded Products

**www.hillsholdings.com.au**  
Hills Holdings Limited





**Hills Holdings Limited**  
A.B.N. 35 007 573 417

Issue October 2011  
PD2486c