

WARNING!

- ALWAYS WALK THE HOSE BACK TO THE REEL WHEN REWINDING.
- ALWAYS TURN THE WATER OFF AT THE TAP AND RELEASE ALL WATER OUT OF THE HOSE WHEN THE REEL IS NOT IN USE.
- The Automatic Hose Reel is designed for home watering applications using cold water only.
- It is not intended for commercial applications.
- Before use ensure the reel is securely attached to the wall and free of obstructions.
- Do not place undue force on the casing. Doing so may damage the casing or the bracket.
- Children should not be allowed to operate or play with the Automatic Hose Reel.
- Ensure children are clear of the hose and reel casing when unwinding and rewinding.
- Regularly inspect the bracket and securing pin signs of wear.

WARRANTY

2-Year Warranty*

*In addition to other rights and remedies that may be available under any applicable law, AMES Australasia Pty Ltd warrants to the purchaser of the product (customer) that this product will be free from defects in workmanship and materials for 2 years from the date of purchase of the product. If a defect in material or workmanship becomes evident during that period, AMES Australasia Pty Ltd will, at its option, either:

- replace the product; or
- refund to the customer the purchase price paid by the customer for the product.

In the event of such a defect, the product should be returned to the place of purchase of the product by the customer, together with proof of purchase, for replacement or refund. Any handling and transportation (and other expenses incurred in claiming under this warranty) are not covered by this warranty and will be borne by the customer, not AMES Australasia Pty Ltd.

The obligation of AMES Australasia Pty Ltd under this warranty is limited to the circumstances set out above and is subject to:

- the product not having been altered, tampered with or otherwise dealt with by any person in a manner other than as intended in respect of the relevant product; and
- the product not having been used or applied in a manner that is contrary to customary usage or application of the relevant product or contrary to any stated instructions or specification of AMES Australasia Pty Ltd (or its related bodies corporate).

For products purchased in Australia: Our goods come with guarantees that cannot be excluded under the Australian Consumer Law. You are entitled to a replacement or refund for a major failure and compensation for any other reasonably foreseeable loss or damage. You are also entitled to have the goods repaired or replaced if the goods fail to be of acceptable quality and the failure does not amount to a major failure. For products purchased in New Zealand: Our goods come with guarantees that cannot be excluded under the Consumer Guarantees Act. AMES Australasia Pty Ltd will comply with our obligations to you under the Consumer Guarantees Act.

Hills Contacts

We are committed to providing you with complete customer satisfaction. If you have any questions or comments about our products or services please contact your nearest Customer Service Centre during their local business hours:

Australia

1300 327 293

New Zealand

0800 021 027

AMES Australasia Pty Ltd

ABN 89 169 427 061

Level 1, 660 Doncaster Road,
Doncaster Vic 3108

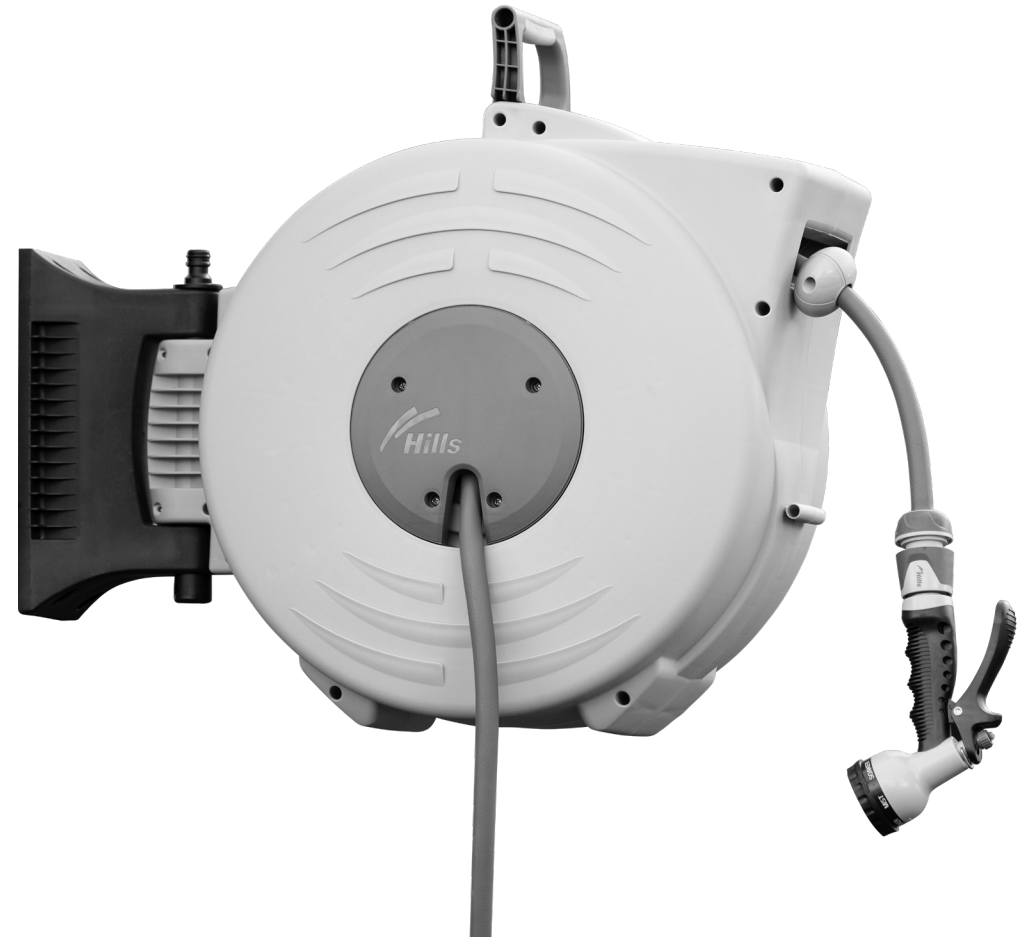
Email: hills@amesau.com

Website: hillshome.com.au

Consumer Advice: hillshome.com.au/need-help

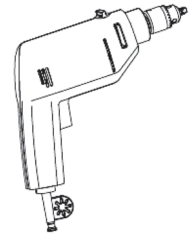


20m Automatic Hose Reel



WARNING! READ and UNDERSTAND before using.
Save these instructions for future reference.

TOOLS REQUIRED



Electric drill



Phillips screwdriver

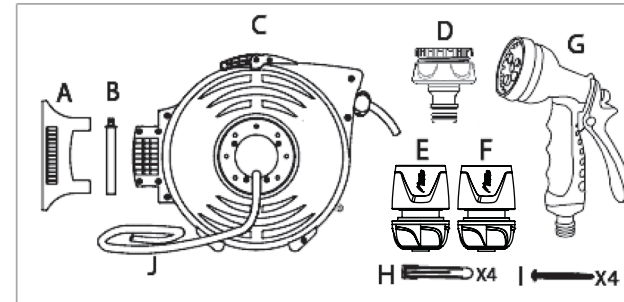


8mm masonry drill bit



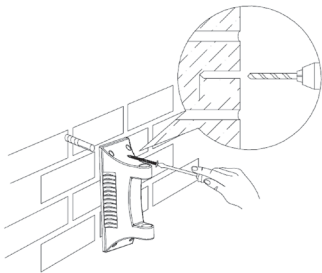
Pen or pencil

PARTS

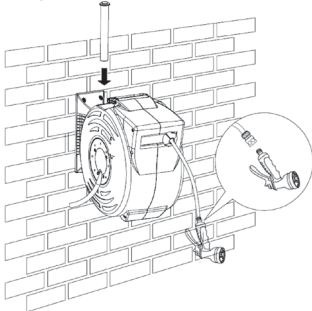


- A. Wall mounting bracket
- B. Securing pin
- C. Reel
- D. 1x Hills universal tap adapter (suits 1/2" and 3/4" taps)
- E. 1x Hills 12mm hose connector
- F. 1x Hills 12mm hose connector with waterstop
- G. 1x Multi-function spray gun
- H. 4x Wall plugs
- I. 4x Screws
- J. 20m Tap to reel hose

INSTALLATION INSTRUCTIONS



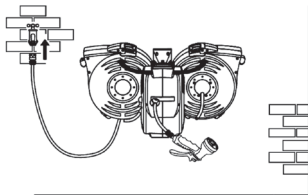
1. Select suitable position to mount your Automatic Hose Reel. The Hose Reel should be mounted at approximately waist height.



2. Using the bracket as a template, mark the location of the screws. Using an 8mm drill bit, drill the 4 holes and insert the wall plugs into the holes. Align the bracket and fix with the 4 screws.

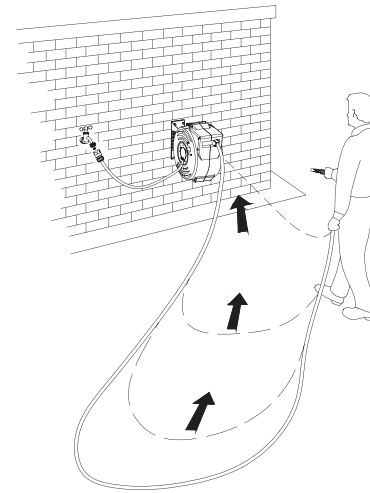
3. Align the back of the reel with the wall bracket and insert the securing pin through the join.

4. Attach the 1.5m tap to reel connector to your tap using the universal tap adapter. Test to ensure the reel rotates freely through 180° with the tap adapter connected.



INSTRUCTIONS FOR USE

Now that your Automatic Hose Reel is securely mounted and connected to the tap, it is ready for use.



1. Before first use, turn the water on at the tap and unwind the hose. The hose will unwind by simply taking hold of the hose and walking away from the reel. This will allow water to flow freely through the hose and reel.

2. The automatic locking ratchet will hold the hose in place at the desired length. The mechanism will 'click' as the hose is locked in place or rewound.

3. To release, pull the hose away from the reel. You will feel the hose start to rewind, walk back with the hose.

4. When finished, turn the water off at the tap and release any water left in the hose.

5. You can lock the reel by securing a padlock to the bottom of the securing pin.

